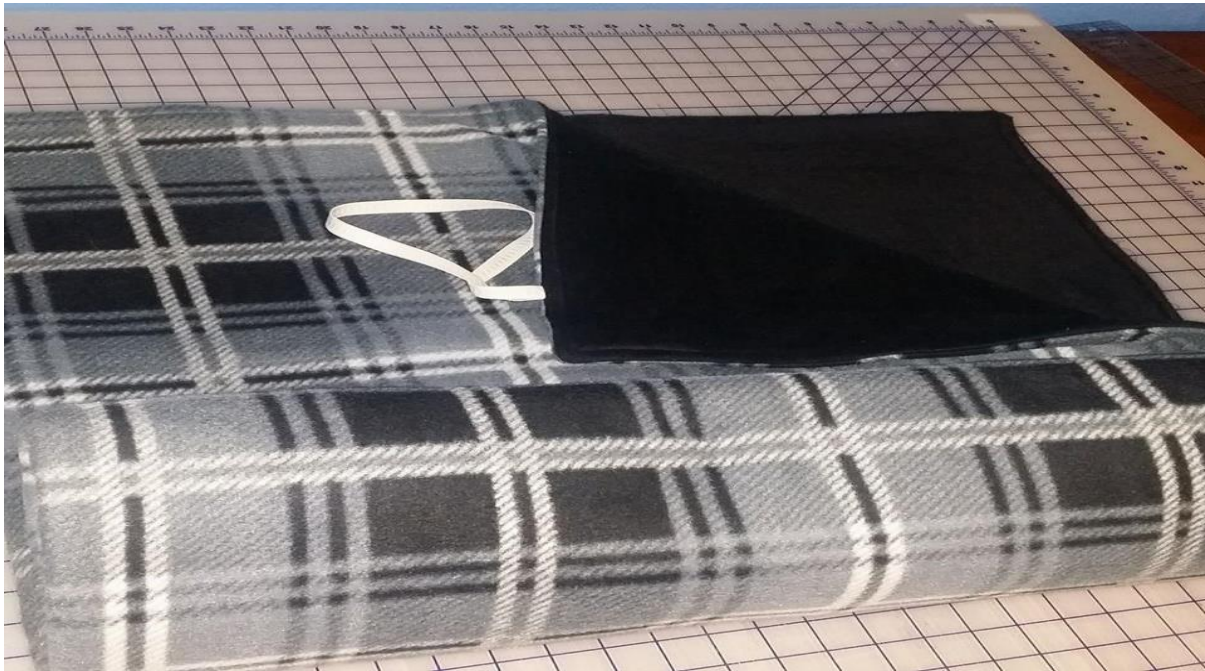




Blanket Patterns



Patterns call for fleece (top and backing) and thick batting for warmth. Other fabric choices can be used but make sure to select fabrics and batting for warmth.

Two Styles:

Top Stitch
Self Binding

Standard Size: 60 x 72 (blankets can be modified for smaller or larger blankets)

Variations:

- can measure out one piece of fabric measuring 60 x 72 for both top and backing
- 12 in square blocks— 5 blocks per row/ 6 blocks in a column
Size will measure 60 x 72
- 16 in square blocks - 4 blocks per row / 5 blocks in a column
Size will measure 64 x 80

Materials Needed:

- 3 yards of fabric for top and backing
- Batting
- Thread
- Elastic - width $\frac{3}{4}$ (for top stitch style)

Top Stitch Style

1. Square up top, batting, and backing.
2. Sandwich all three:

Batting

Backing – right side up

Top – right side down

Ensure that all three are smooth and taut.



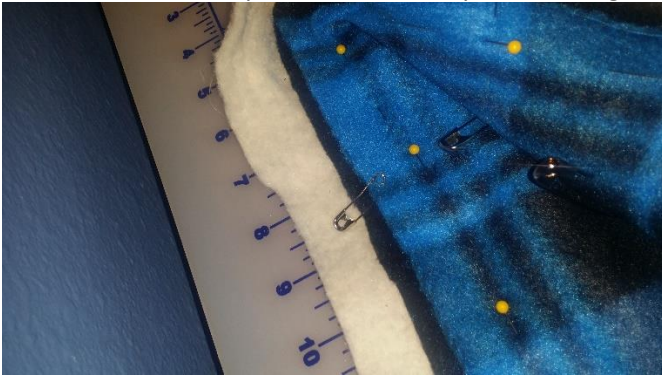
3. Baste all three layers with pins.
You can also use baste spray for the batting and backing. DO NOT SPRAY BASTE THE TOP.
4. Cut two strips of elastic – 18 inches each.



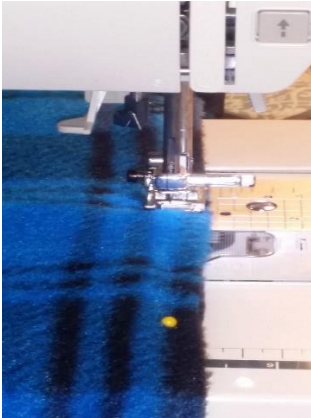
Fold in half and stitch across the short ends. Use your back stitch or stitch across the ends several times.



5. Measure 2 inches from the left side and place one of the folded elastic strips between the top and backing. Pin in place.
6. Fold the blanket in half and mark two inches from the fold with a pin. Insert the elastic strips between the top and batting. Secure with a pin.



7. Pin around the outside leaving a 6-inch opening for turning later.
8. Stitch with a 1-inch seam all around. Do not stitch the 6-inch opening.
9. Cut off any excess batting.
10. Turn blanket inside out. Make sure to poke out the corners. Trim corners (make sure not to cut stitching).
11. Smooth out blanket.
12. Pin 6-inch opening closed.
13. Top stitch with a 1-inch seam all around.



14. Quilt blanket – optional

Self-Binding

Standard Size: 60 x 72 (blankets can be modified for smaller or larger blankets)

Materials: 3 yds of fabric for top
 3 yds of fabric for backing
 3 yds of batting
 Thread

Variations:

- can measure out one piece of fabric measuring 60 x 72 for both top and backing

- 12 in square blocks— 5 blocks per row/ 6 blocks in a column
Size will measure 60 x 72

- 16 in square blocks - 4 blocks per row / 5 blocks in a column
Size will measure 64 x 80

1. Square top and batting.
2. Place top and batting on top of backing.
3. Measure 2 inches from edge on each side (all 4 sides).
4. Cut 2 inches from top and batting – all 4 sides.
5. Place top and batting on top of backing. Smooth out and baste.
6. Quilt blanket.
7. Fold edges over and pin.



8. Miter the corners and pin.



9. Using a zig-zag stitch, stitch the inner edges all around.

10. On the corners, use your backstitch option to ensure the corners are sewed down.

